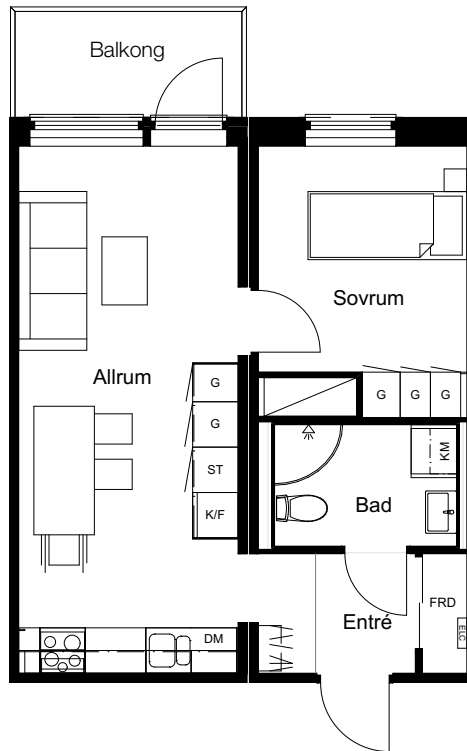
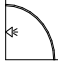

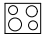


2 rok, 40,2 kvm

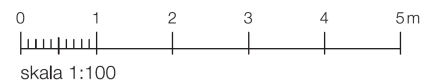
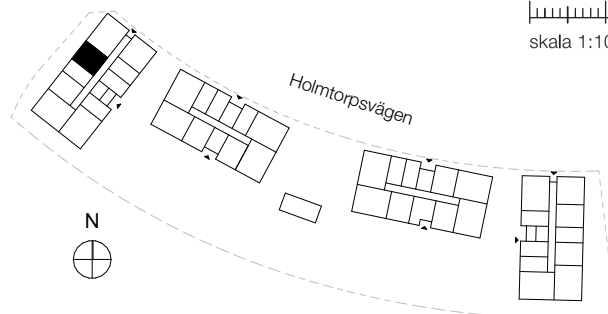


Teckenförklaring

| | | | |
|---|---------------------|---|-----------------|
| G | Garderob | TM | Tvättmaskin |
| DM | Diskmaskin | TT | Torktumlare |
| ST | Städsåp | KM | Kombimaskin |
| K | Kyl | ELC | Elcentral |
| F | Frys |  | Duschvägg |
| K/F | Kombinerad kyl/frys |  | Entré Trapphus |
|  | Spis | FRD | Lägenhetsförråd |

Föreställningen

Lgh A-1006 Bottenvåning
Lgh A-1106 Våning 1
Lgh A-1206 Våning 2



Plan 12 - våning 2
Plan 11 - våning 1
Plan 10 - bottenvåning